

Wipe dispensers

Overview & instructions for use



Dispenser overview

5 reasons to install dispensers

1. Promote good IPC practise

Environmental decontamination is a key pillar of IPC. Environmental decontamination keeps surfaces and medical devices clean and reduces pathogen contamination.

2. Promote best practise

Dispensers are part of our environmental decontamination bundle which focuses on making it easier to clean frequently and aid compliance.

3. Easy access

Dispensers placed at key points around the ward/department where cleaning and disinfection occurs frequently (point of use).

4. Play into human behaviour

If end users can see the wipes and easily access them, they're more likely to use them.

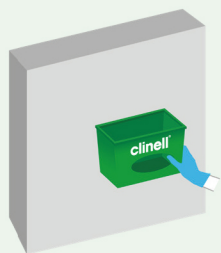
5. Encourage correct storage of cleaning and disinfectant wipes

Wipes remain hydrated inside the pack throughout their open shelf life. This ensures the disinfectant formula is ready to be used and surfaces can receive the contact time required to make the product effective.

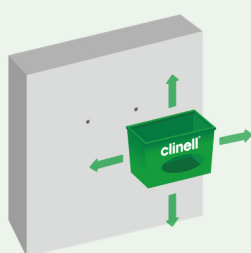
Clinell Dispenser facts:

- The dispenser code CWD has the following dimensions L 27.5cm W 13.0cm H17.2cm. Weighs 300g. It is constructed from polypropylene plastic.
- The wipes are loaded from the top of the dispenser.
- CWD is designed to house the CW200 Clinell Universal Wipes, BCW100 Clinell Universal Wipes and CS25 Clinell Peracetic Acid Wipes. The weight of these products are 1.3kg, 1.2kg and 300g respectively. No heavier items should ever be placed in the dispenser. Load not to exceed 2.5kg. Intended 1 pack per dispenser and no items to be stored on/in or on top of the dispenser.
- Dispensers should be cleaned in accordance with local cleaning policy.
- Keep 16cm of clear space above the top of the dispenser in order for a new pack of wipes to be loaded.

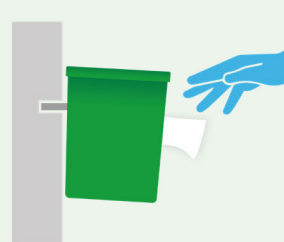
Installation process



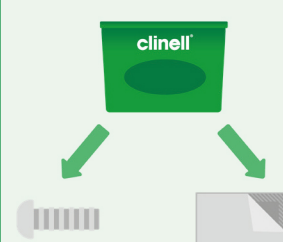
Position the dispensers as close as possible to the nominated location. However the position may vary to allow for ease of access and conflict with other services and products in the area.



The position may change slightly in order to pick up previous fixing to avoid any more holes in the walls and hide existing holes in the wall behind the dispenser. This may result in screws that are longer or heavier gauge based on what was placed in the wall previously.



The fixings above are to hold the dispenser and product if it suits the specified site.



If you prefer you can use screw fitting & adhesive (top layer, middle, bottom, or all) together but advise one or the other the other where appropriate.

Installation based on material

- **Cavity wall** - two 6 x 35/45 mm cavity fixings with 25 mm flat washers at the mid point in the bracket where the key holes are provided.
- **Concrete/masonry wall** - two 6 mm plugs (the hole drilled for the plug is a 5.5mm) with 2 x 25mm button head screws at the at the mid point in the bracket where the key holes are provided.
- **Joinery** - two screws (6 x 25mm screws (with 19mm flat washers)).
- **Metal framing** - two self tapping screws plus washers as required.
- **Glass** - double sided tape + remove backing peel.
- **Wire** - two cable ties.
- **Adhesive** - repeat glass instruction.

Fitting guidance only. Please assess appropriate methods to suit.